



# SourceFlex™ System

## Model SAS-SM8A Sonic Mushroom™

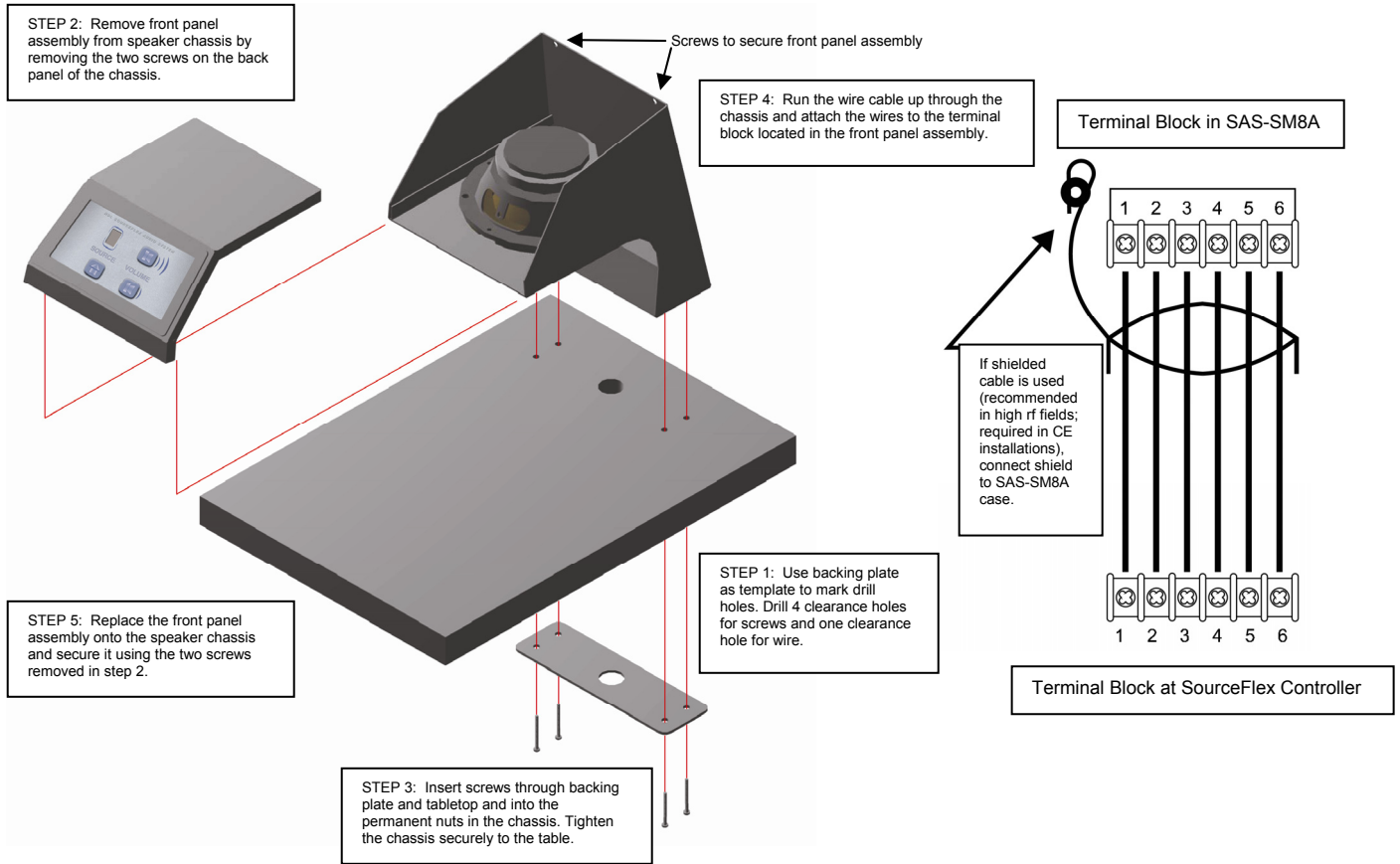
### Tabletop Listening Station



## Installation/Operation

EN55103-1 E1-E5; EN55103-2 E1-E4

Typical Performance reflects product at publication time exclusive of EMC data, if any, supplied with product. Specifications are subject to change without notice.



### TYPICAL PERFORMANCE

Input terminals driven from SourceFlex controller:  
 Frequency Response:  
 SPL:  
 Controls (3):  
 Volume Adjustment Range:  
 Ramp Rate:  
 Display:  
 Control buttons:  
 Construction:  
 Mounting:  
 Color:  
 Power Requirement:  
 Interconnection Cable:  
 Wire Gauge / Distance:

Balanced audio, display data, switching logic, power  
 Maximum intelligibility on table top installation  
 90 dBA @ 1 meter (max)  
 Momentary pushbuttons: channel select, volume ramp UP, volume ramp DOWN  
 40 dB  
 5 seconds nominal for 40 dB  
 7-segment red LED ("0" = OFF or paging, "1" through "8" = selected channel)  
 Recessed beneath moisture-sealed user-replaceable polycarbonate  
 Industrial quality tamper-resistant steel  
 4-point mounting on tabletops up to 1.2" (3.0cm)  
 RDL Granite (neutral appearance, masks fingerprints)  
 24 to 33 Vdc @ 225 mA, Ground-referenced (power provided from SourceFlex controller)  
 6 conductors from controller (twisted pair cable may be used)  
 22 AWG / 0.3 mm<sup>2</sup> / 0.6 mm: Up to 200 ft. (61 m)  
 20 AWG / 0.5 mm<sup>2</sup> / 0.8 mm: Up to 325 ft. (100 m)  
 18 AWG / 0.7 mm<sup>2</sup> / 1.0 mm: Up to 500 ft. (150 m)

Dimensions:

Height: 6.75 in. (17.2 cm)  
 Width: 6.25 in. (15.9 cm)  
 Depth: 7.75 in. (19.7 cm)

**NOTE:** This equipment has been tested and found to comply with the limits for a Class B digital device, pursuant to part 15 of the FCC Rule. These limits are designed to provide reasonable protection against harmful interference in a residential installation. The equipment generates, uses and can radiate radio frequency energy and, if not installed and used in accordance with the instructions, may cause harmful interference to radio communications. However, there is no guarantee that interference will not occur in a particular installation. If this equipment does cause harmful interference to radio or television reception, which can be determined by turning the equipment off on, the user is encouraged to try to correct the interference by one or more of the following measures:

- Reorient or relocate the receiving antenna
- Increase the separation between the equipment and receiver
- Connect the equipment into an outlet on a circuit different from that which the receiver is connected.
- Consult the dealer or an experienced radio/TV technician for help.