

SourceFlex™ System

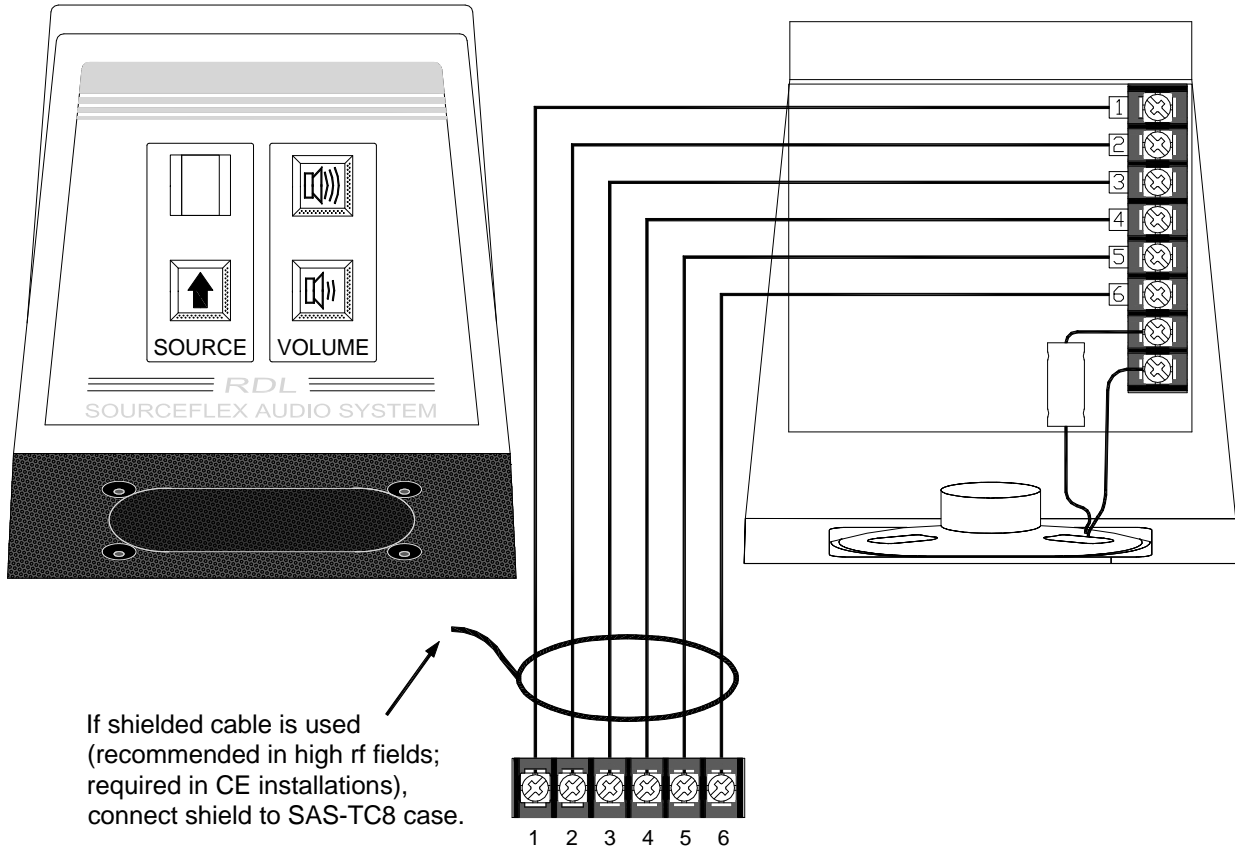
Model SAS-TC8

Tabletop Listening Station

Installation/Operation



EN55103-1 E1-E5; EN55103-2 E1-E4
Typical Performance reflects product at publication time exclusive of EMC data, if any, supplied with product. Specifications are subject to change without notice.



Connection to SourceFlex controller
SAS-8C, SAS-8i or SAS-82

TYPICAL PERFORMANCE

| | |
|---------------------------------|---|
| Input: | 6-position terminal block |
| Display: | 7-segment red LED (0 = off or Paging; 1 through 8 = selected channel) |
| Control buttons (3): | Recessed, protected by moisture-resistant polycarbonate |
| Controls: | Momentary button channel SELECT |
| | Momentary button volume ramp UP |
| | Momentary button volume ramp DOWN |
| Ramp Rate: | 5 seconds nominal for 40 dB audio level adjustment |
| Frequency Response: | Optimized for tabletop intelligibility |
| THD+N: | < 0.1% (20 Hz to 20 kHz) @ 1 kHz |
| Wall Mounting (above tabletop): | U.S.: Mounts to single electrical box, RDL WB-1U wall box or directly to wall |
| | International: Mounts to RDL WB-1U wall box or directly to wall |
| Table edge Mounting: | Mounts to table edge using optional SAS-TEM bracket |
| Finish: | RDL ULTRASTYLE design |

NOTE: This equipment has been tested and found to comply with the limits for a Class B digital device, pursuant to part 15 of the FCC Rule. These limits are designed to provide reasonable protection against harmful interference in a residential installation. The equipment generates, uses and can radiate radio frequency energy and, if not installed and used in accordance with the instructions, may cause harmful interference to radio communications. However, there is no guarantee that interference will not occur in a particular installation. If this equipment does cause harmful interference to radio or television reception, which can be determined by turning the equipment off on, the user is encouraged to try to correct the interference by one or more of the following measures:

- Reorient or relocate the receiving antenna
- Increase the separation between the equipment and receiver
- Connect the equipment into an outlet on a circuit different from that which the receiver is connected.
- Consult the dealer or an experienced radio/TV technician for help.