



## INSTALLATION MANUAL

### EZ-HRA3

**10.4" Rack Adapter** for 3 Increments of 1/6 Rack Width



RDL EZ Series products provide the highest level of value to A/V professionals and A/V users who demand professional quality. For long-term performance, quality and value, you have made the EZ choice. EZ products are made in the USA by RDL, the inventor of application-specific modules bringing decades of experience as the world's leading manufacturer of high-reliability performance products to the A/V industry. Visit the RDL website for hundreds of professional A/V products made in the USA by RDL.



**RDL**<sup>®</sup>  
Radio Design Labs

[www.rdl.net.com](http://www.rdl.net.com)

**Decades of Performance, Quality and Value**

---

RDL • 659 6th Street • Prescott, AZ • USA 86301 • Sales: 800-281-2683 • 928-443-9391  
Tech Support: 800-933-1780 • 928-778-3554 • RDL Europe Sales & Support: (31) 20-6238-983

# EZ-HRA3

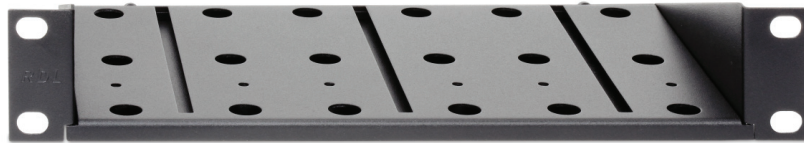
## Rack Adapter

- Mounts All EZ A/V Products
- Mounts EZ Storage Drawers
- Base Plate Slides Out for Easy Product Mounting
- Occupies One RU in 10.4" Rack

---

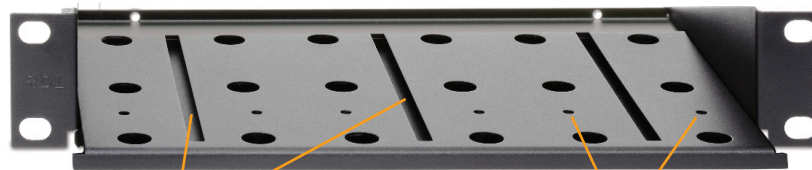
## EZ-RA6 BASE PLATE ASSEMBLY

***EZ-HRA3 with Base Plate Installed***



***EZ-HRA3 with Base Plate Forward***

With the base plate screws removed from the rear of the EZ-HRA3 tray, the base plate slides forward to facilitate installation of EZ products.



EZ drawer mounting slots

EZ product mounting screw holes

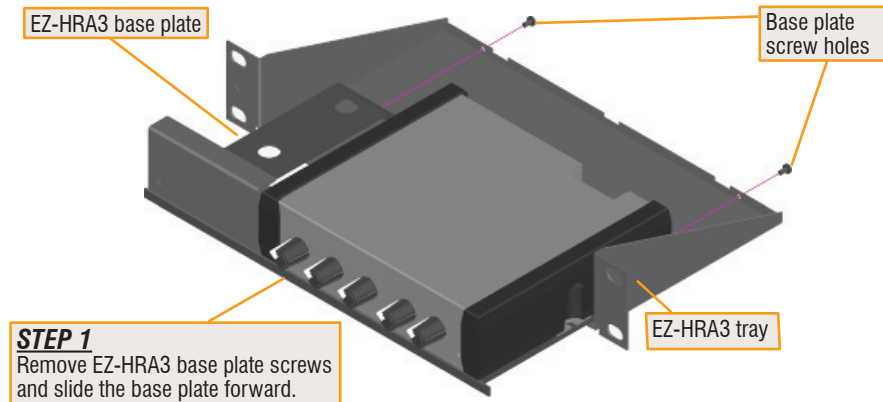


[www.rdl.net.com](http://www.rdl.net.com) . . . [www.rdlez.com](http://www.rdlez.com)

---

---

## PRODUCT INSTALLATION IN EZ-HRA3



**STEP 2**  
Mount EZ products, filler panels and drawers to the base plate.

**EZ PRODUCT DETAIL:** Mount an EZ product to the base plate.

**FILLER PANEL DETAIL:** Mount an EZ-FP1 Filler Panel to the base plate.

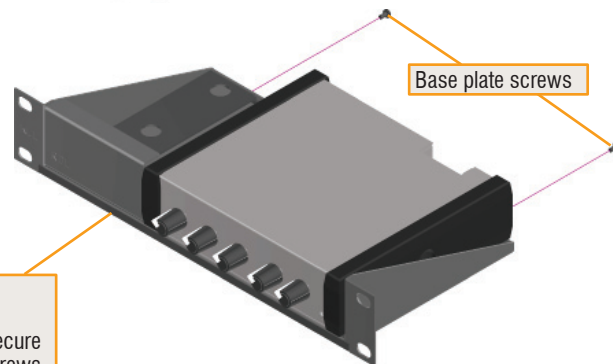
**EZ-HRA3 base plate bottom view**

**Product mounting screws**

**DRAWER DETAIL:** Insert the glide tabs into the base plate slot(s).

**Base plate screws**

**STEP 3**  
Slide base plate back into the EZ-HRA3 rack mount tray and secure the base plate using the three screws.



## OTHER SELECTED EZ SERIES MOUNTING ACCESSORIES

### EZ-CC6

Component Chassis for 6 Increments of 1/6 Rack Width



### EZ-UCB2

Under-Counter Brackets 1/6 or 1/3 Rack Width



### EZ-FP1

Filler Panel 1/6 Rack Width



Mounts in EZ-CC6 and EZ-RA6

### EZ-SMB1

Surface Mount Bezel for 1/6 Rack Width Products



### EZ-SMB2

Surface Mount Bezel for 1/3 Rack Width Products



### EZ-SD1

Storage Drawer 1/6 Rack Width



Use EZ-SD1 and EZ-SD2 in Place of Filler Panel(s)  
Drawers Hold Adapters and Cables  
Mount in EZ-CC6 and EZ-RA6

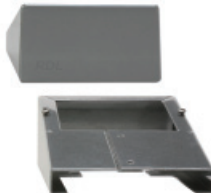
### EZ-SD2

Storage Drawer 1/3 Rack Width



### EZ-DC1

Desktop Chassis 1/6 Rack Width



### EZ-DC2

Desktop Chassis 1/3 Rack Width



Complete accessory listing available at: [rdlez.com](http://rdlez.com)

CE

891-1663

Copyright © 2009 Radio Design Labs, Inc. RDL, Radio Design Labs and the RDL logo are registered trademarks of Radio Design Labs, Inc. Data reflects product at publication time, subject to change without notice. "Made in USA" applies to all EZ products except power supplies.