



INSTALLATION MANUAL

EZ-SD1 and EZ-SD2

Storage Drawers



EZ-SD1



EZ-SD2

RDL EZ Series products provide the highest level of value to A/V professionals and A/V users who demand professional quality. For long-term performance, quality and value, you have made the EZ choice. EZ products are made in the USA by RDL, the inventor of application-specific modules bringing decades of experience as the world's leading manufacturer of high-reliability performance products to the A/V industry. Visit the RDL website for hundreds of professional A/V products made in the USA by RDL.



www.rdlnet.com

Decades of Performance, Quality and Value

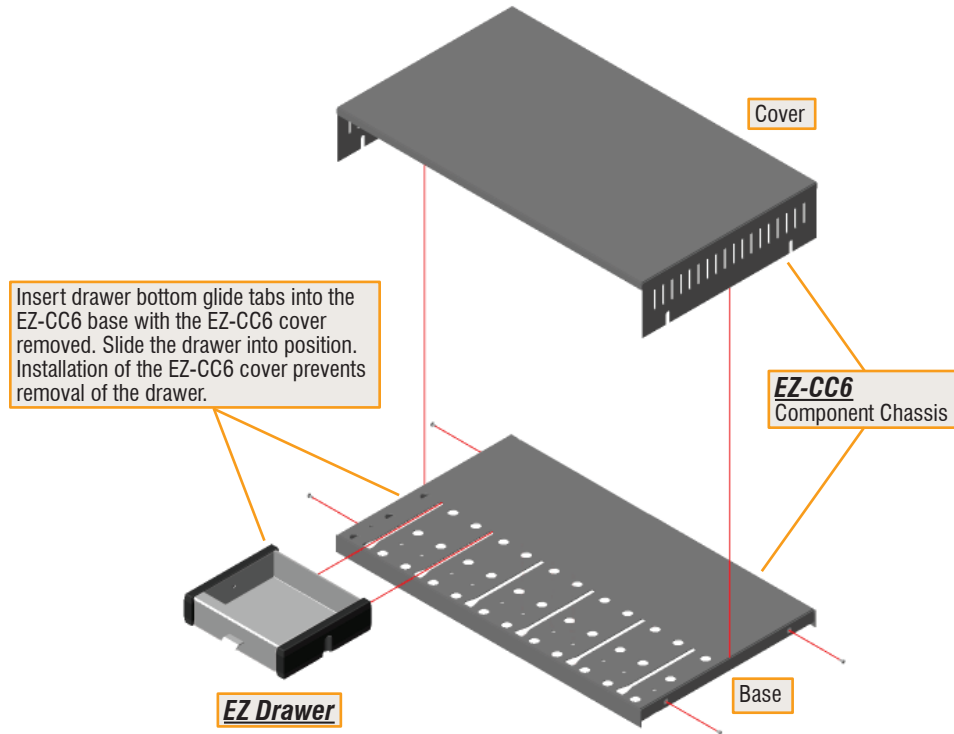
RDL • 659 N. 6th Street • Prescott, AZ • USA 86301 • Sales: 800-281-2683 • 928-443-9391
Tech Support: 800-933-1780 • 928-778-3554 • RDL Europe Sales & Support: (31) 20-6238-983

EZ-SD1 and EZ-SD2

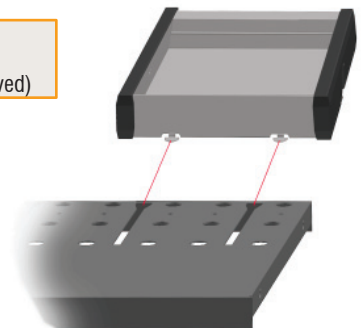
Storage Drawers

- Use In Place of Filler Panel(s)
- Holds Adapters and Cables
- Mount in EZ-CC6 or EZ-RA6

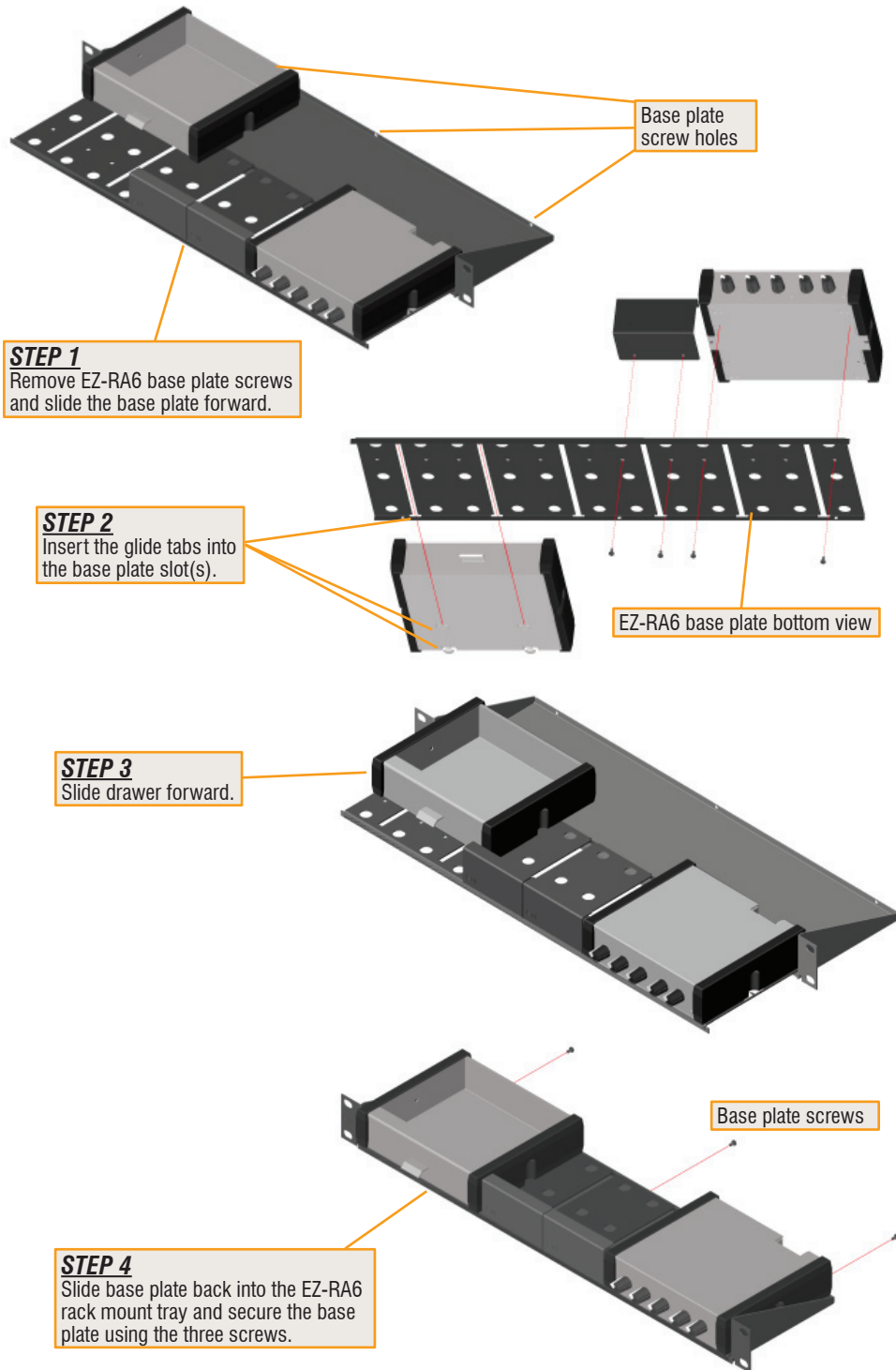
DRAWER INSTALLATION IN EZ-CC6



DETAIL: Angle the drawer slightly to insert the glide tabs into the slot(s). (EZ-CC6 rear view with cover removed)



DRAWER INSTALLATION IN EZ-RA6



OTHER SELECTED EZ SERIES MOUNTING ACCESSORIES

EZ-RA6

Rack Adapter for 6 Increments of 1/6 Rack Width



EZ-CC6

Component Chassis for 6 Increments of 1/6 Rack Width



EZ-SMB1

Surface Mount Bezel for 1/6 Rack Width Products



EZ-SMB2

Surface Mount Bezel for 1/3 Rack Width Products



EZ-UCB2

Under-Counter Brackets 1/6 or 1/3 Rack Width



EZ-FP1

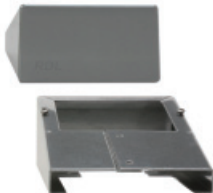
Filler Panel 1/6 Rack Width



Mounts in EZ-CC6 and EZ-RA6

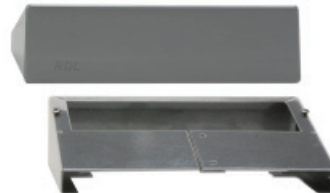
EZ-DC1

Desktop Chassis 1/6 Rack Width



EZ-DC2

Desktop Chassis 1/3 Rack Width



Complete accessory listing available at: rdlez.com

CE

891-1633

Copyright © 2009 Radio Design Labs, Inc. RDL, Radio Design Labs and the RDL logo are registered trademarks of Radio Design Labs, Inc. Data reflects product at publication time, subject to change without notice. "Made in USA" applies to all EZ products except power supplies.