



INSTALLATION AND OPERATION MANUAL

EZ-VM24E

Model numbers:
EZ-VM24E includes power supply with North American plug
EZ-VM24EX includes worldwide power supply (specify plug)

VGA/XGA Switcher/Equalized Distribution Amplifier



RDL EZ Series products provide the highest level of value to A/V professionals and A/V users who demand professional quality. For long-term performance, quality and value, you have made the EZ choice. EZ products are made in the USA by RDL, the inventor of application-specific modules bringing decades of experience as the world's leading manufacturer of high-reliability performance products to the A/V industry. Visit the RDL website for hundreds of professional A/V products made in the USA by RDL.



www.rdlnet.com

Decades of Performance, Quality and Value

RDL • 659 N. 6th Street • Prescott, AZ • USA 86301 • Sales: 800-281-2683 • 928-443-9391
Tech Support: 800-933-1780 • 928-778-3554 • RDL Europe Sales & Support: (31) 20-6238-983

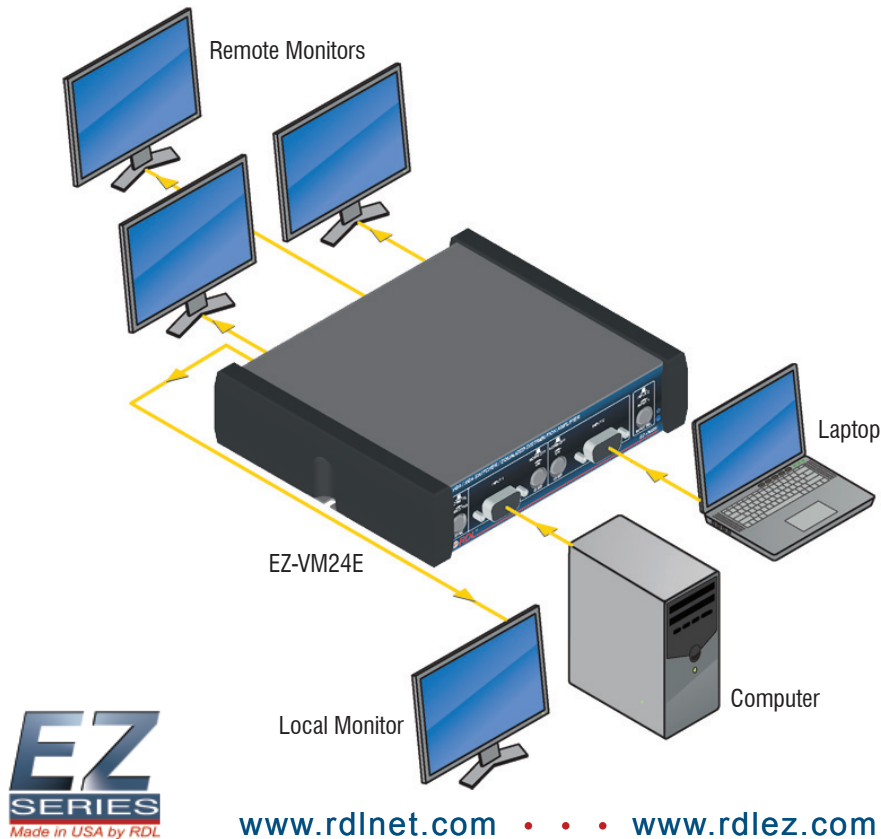
EZ-VM24E

VGA/XGA Switcher/Equalized Distribution Amplifier

- Inputs and Outputs on HD15 Female Connectors
- Two Front-Panel Switch-Selectable Inputs
- Wide RGB Bandwidth > 400 MHz Loaded
- High Resolution Compatibility VGA through QXGA
- Solid-State Switching of Video and Sync Signals
- Reliable Full-Size Switches for Switched Functions
- Switch-Selectable TTL or Video 75 Ω Input Sync
- NORM ID BIT Connects LOCAL MONITOR and INPUT 1 ID
- Front-Panel ID Bit Selection for Each Input
- DC RGB Coupling, Output Polarity and Offset Follow Input
- Rear-Panel GAIN and EQ Peaking Trimmers

The EZ-VM24E is a high-resolution computer video source selector and distribution amplifier with two inputs and four outputs. A front-panel switch selects between the inputs. Each input has an associated ID BIT switch to assure compatibility with various computers. The sync for input 1 is front-panel switch-selectable between standard TTL or 75 Ω video. One of the four outputs is individually buffered for driving the computer monitor. The other three outputs are driven by separate output amplifiers that include rear-panel gain and equalization trimmers that provide adjustable compensation for quality monitor cable lengths exceeding 100 m (300 ft). All switched functions are easily accessible on the front panel. Input switching is fully solid state for long-term reliable immunity from switch noise and the bandwidth limitations of mechanical switches. The EZ-VM24E is used in houses of worship, restaurants, clubs, meeting rooms, educational facilities, conference rooms, stores and commercial A/V systems.

TYPICAL APPLICATION



EZ
SERIES
Made in USA by RDL

www.rdlnet.com . . . www.rdlez.com

SYNC INPUT SELECTOR

The SYNC switch selects between standard computer card TTL sync and RGBHV 75 ohm video format sync. Set the switch to the NORM TTL position (button OUT) for use with normal computer video sources; set to the VIDEO 75 OHM position (button IN) for use with 75 ohm sync sources.

ID BITS (separate switch provided for each input)
Set to NORM OFF position (button OUT) unless computer video output fails to operate with the connected monitors; set switch to ON position (button IN) if needed to activate computer video monitor output (not typically required unless using certain laptops).

VIDEO INPUT 1

Connect the primary video source to INPUT 1.

VIDEO INPUT 2

Connect the secondary video source to INPUT 2.

INPUT SELECTOR

Select INPUT 1 (button IN) or INPUT 2 (button OUT) to feed the rear-panel OUTPUT jacks.

POWER INDICATOR

Glow blue when the product is connected to a valid power source.



24 VDC INPUT

Insert plug from power supply. Rotate 1/4 turn clockwise to lock.

LOCAL MONITOR OUTPUT

Connect the LOCAL MONITOR output to the input of the local computer video monitor.

MONITOR OUTPUTS

Connect to the video inputs of 1, 2 or 3 monitors or projectors.

EQUALIZATION ADJUSTMENT

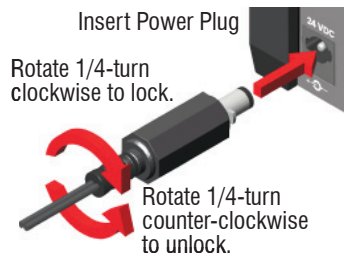
If long video cables are connected to the outputs, turn the EQ control clockwise until the picture sharpness appears normal. If short output cables are connected, or if the picture clarity is normal, set the EQ control fully counter-clockwise.

GAIN ADJUSTMENT

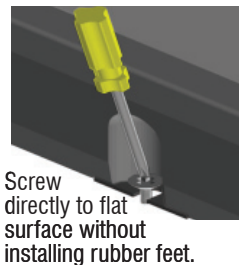
If long video cables are connected to the outputs, turn the GAIN control clockwise until the picture brightness appears normal. If short output cables are connected, or if the picture brightness is normal, set the GAIN control fully counter-clockwise.

FOR BEST PICTURE QUALITY, REMOTE VIDEO MONITOR "OPTIMIZATION" FUNCTION SHOULD BE RUN, IF PROVIDED.

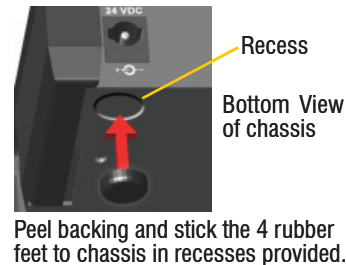
POWER CONNECTION



FIXED MOUNTING



RUBBER FEET ATTACHMENT



SELECTED MOUNTING ACCESSORIES Complete accessory listing available at: rdlez.com

EZ-RA6

Rack Adapter for 6 Increments of 1/6 Rack Width



EZ-CC6

Component Chassis for 6 Increments of 1/6 Rack Width



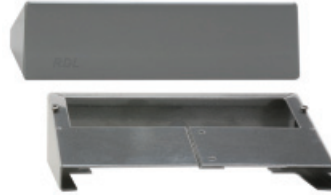
EZ-SMB2

Surface Mount Bezel for 1/3 Rack Width Products



EZ-DC2

Desktop Chassis 1/3 Rack Width



EZ-UCB2

Under-Counter Brackets 1/6 or 1/3 Rack Width



EZ-SD2

Storage Drawer 1/3 Rack Width

Use In Place of Filler Panel
Holds Adapters and Cables
Mounts in EZ-CC6 and EZ-RA6



TYPICAL PERFORMANCE

Inputs (2): VGA - QXGA RGBHV or RGB with combined sync
Outputs (4): LOCAL MONITOR (1, Buffered, ID bit pass-thru to INPUT 1), Monitor (3, with GAIN and EQ trim)
Gain: Unity (LOCAL MONITOR output), Unity to +6 dB (MONITOR output)
Equalization (peaking): None (LOCAL MONITOR output), Adjustable 0 to +8 dB at 100 MHz (MONITOR output)
Video bandwidth: > 400 MHz
Output offset: ± 5 mV typ. (75 Ω load)
Video impedance: 75 Ω (Input and output)
Sync (HV) input: 500 Ω TTL or 75 Ω Video (Switch-selectable), 0.7 V to 5 V p-p
Sync (HV) output: 5V TTL
Sync (HV) Propagation Delay: < 4 nS typ.
Sync (HV) Rise Time: < 4 nS typ.
Sync (combined): Output follows input
Bit Control: Switch-selectable (individual selector per input, pin 4, over-rides LOCAL MONITOR jack ID bit pass-thru)
24 Vdc power supply current: 70 mA (idle), 90 mA (max.)
Power supply input voltage: 100 to 240 VAC
Warranty: 3 Years; contact RDL technical support department for assistance
Case dimensions: 5.75" (14.6 cm)W x 5" (12.7 cm)D
Mounting size: 1/3 rack width

CE

891-1580

Copyright © 2009 Radio Design Labs, Inc. RDL, Radio Design Labs and the RDL logo are registered trademarks of Radio Design Labs, Inc. Data reflects product at publication time, subject to change without notice. "Made in USA" applies to all EZ products except power supplies.