

WHAT'S NEW FOR 2012



- 8 Ω / 4 Ω Interface
- Dual Microphone Compressor
- Audio Distribution Amplifiers
- Stereo Format Converter
- Message Repeater
- Wall Mount and Rack Adapters
- All New Guest Room Audio System

8Ω / 4Ω Input Interface



- Converts an Amplifier Output to Line Level
- Bridges 8 Ω or 4 Ω Speaker Line
- Converts Amplified Levels from 0.5W to 400W
- Excellent Low Frequency Response
- Detachable Terminal Block Connections
- Balanced or Unbalanced Output

Add a sub woofer

Add an amplifier for additional speakers or zones

Same concept as the TX-70A which is used for 25/70/100 V applications

Dual Microphone Compressor HR-MCP2



**Ideal for Broadcast, Sports Venues,
House of Worship or Any High-End
Installation**

- Two Independent Microphone Input Channels
- Produces Consistent Levels from Any Microphone
- Controls Overloads that Cause Distortion and Clipping
- Studio Quality Dual Mic Preamp
- Gain Adjustment from 20 to 60 dB for Line Outputs
- 15 dB Input Pad and 48 Volt Phantom for Both Inputs
- 7 LED Gain Reduction Meter in 3 dB Increments per Channel

AUDIO DISTRIBUTION AMPS

Stereo or Mono Operation



RU-ADA4D

- Stereo 1 x 4 or Mono 1 x 8 DA
- Input Gain Adjust with Dual LED VU Meter
- Individual Output Level Adjustments
- Balanced or Unbalanced Line Level Signals
- Inputs and Outputs on Rear Panel
- Audio Isolated Outputs Prevent Sharing of Receiver Generated Noise



RU-ADA8D

Same as Above Except:

- Stereo 1 x 8 or Mono 1 x 16 DA

STEREO FORMAT CONVERTER

RU-AFC2



- Unbalanced to Balanced Audio
- Balanced to Unbalanced Audio
- Ground Lift for XLR Output
- Front Panel Multi-turn LEVEL Trimmers
- Dual-LED VU Meter for Each Channel

An ideal product for studio, broadcast or A/V installation where consumer audio needs to convert to professional level and back

Another super quiet (.005 THD+N) product from RDL

DIGITAL MESSAGE REPEATER

FP-MR2

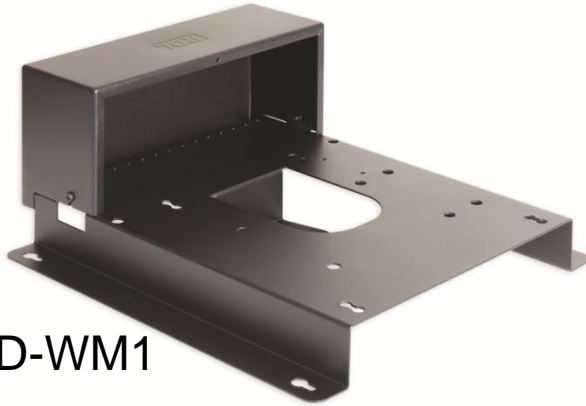


- Music Quality Message Recording
- Up to 1.7 Minute Digital Message Storage
- External Message Actuation
- Interval Timer to Repeat Message Playback
- Background Music Input
- Automatic Voice-Over or Music Ducking

Excellent Quality

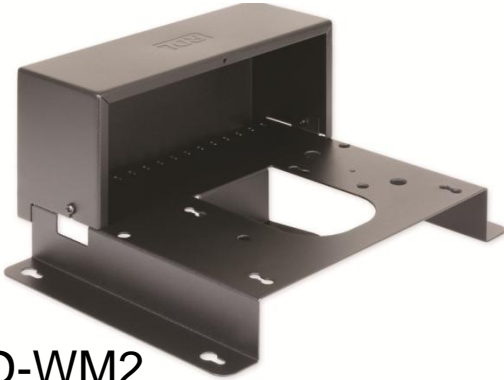
Record message without interrupting background music

WALL MOUNTS FOR HD SERIES AMPLIFIERS AND MIXER AMPLIFIERS



HD-WM1

For Mounting HD Series "U" Models



HD-WM2

For Mounting HD Series "Non-U" Models



One of the last fully featured mixer amp series that can be conveniently mounted on a wall

HALF RACK MOUNTING PRODUCTS



EZ-HRA3 - EZ Series Adapter



HD-HRA1 - HD Series Adapter



HR-HRA1 - Half Rack Series Adapter



RC-HPS3 - Power Supply Adapter



RU-HRA1 - RackUp Series Adapter

Created for the convenience of half racks

GUEST ROOM AUDIO SYSTEM

Additional *FORMAT-A* Audio-Over-CAT-5 Products



FP-TPS1A

TV Audio - Sender

- Stereo RCA Line Level Inputs
- Mono Mini Jack Speaker Level Input
- Dual RJ-45 Jack / CAT-5 Outputs
- TV Audio to Bathroom Speaker Amplifier
- TV Audio to Headphone Amplifier(s)



TP-HA1A

Headphone Amplifier - Receiver

- Stereo Headphone Mini Jack (35mm)
- Volume / Level Control
- Dual RJ-45 Jack / CAT-5 Looping Connectors

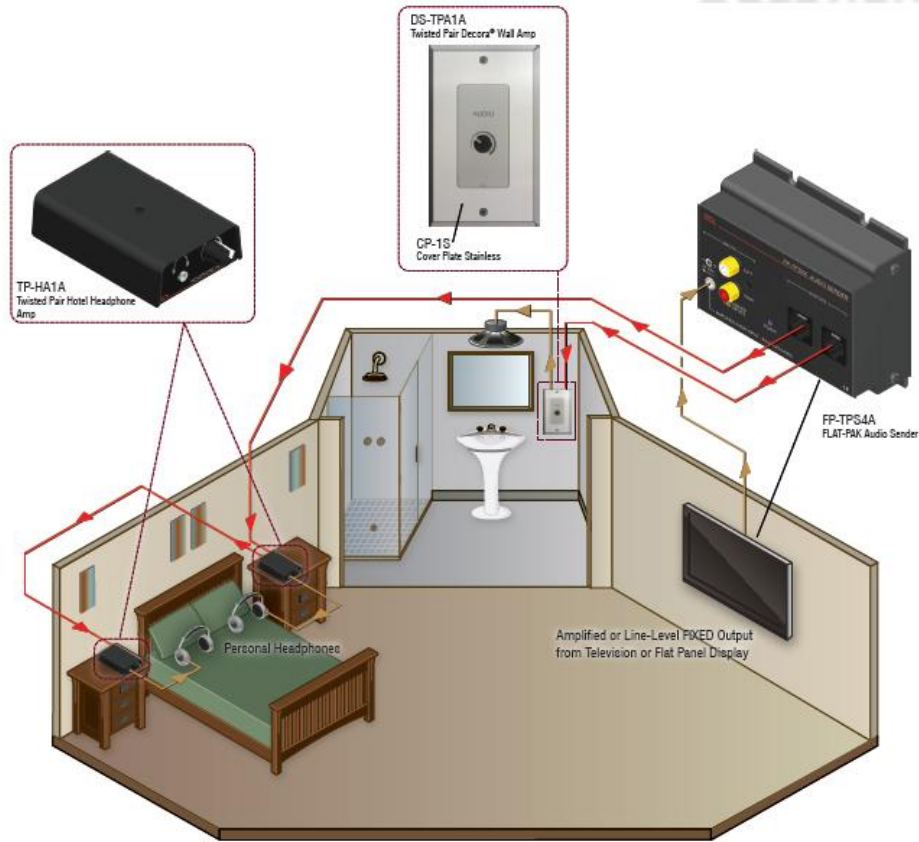


D-TPA1A

Speaker Amplifier - Receiver

- Audio Power and Control of 8 Ω / 4 Ω Speaker
- RJ-45 / CAT-5 Connector; Supplies Power and Audio
- Standard Decora Format

HOTEL ROOM COMPLETE ENHANCED AUDIO SYSTEM



This Diagram Shows a Typical Hotel Guest Room Enhanced With the RDL Guest Room Audio System

- Use Personal Headphones to Listen to High-Quality TV Audio
- Does Not Disturb Other In-room Guests
- Does Not Disturb Neighboring Guests
- Listen to Audio in the Bathroom
- Listen to Any Audio Source Connected to TV Docking Station
- CAT-5 Connection for Fast, Easy Installations
- Great for New Build or Retrofit Installations

GUEST ROOM AUDIO SYSTEM



Versatile Components for Many Applications:

- Hotels, Cruise Ships, Residential; TV-to-Bedside and Bathroom Audio Delivery
- Courtrooms; Multiple Listening Stations for Translation or Hearing Assist
- Language Labs; Headset Amplifiers
- Corporate and Commercial Facilities; Office and Break-room Audio Systems
- And Much More

<http://www.rdl.net.com/system.php?series=17>