



**RDL**<sup>®</sup>  
Radio Design Labs

SPECIALISTS IN PRACTICAL PRECISION ENGINEERING™

# ACCESSORIES

## Model FP-PBR4

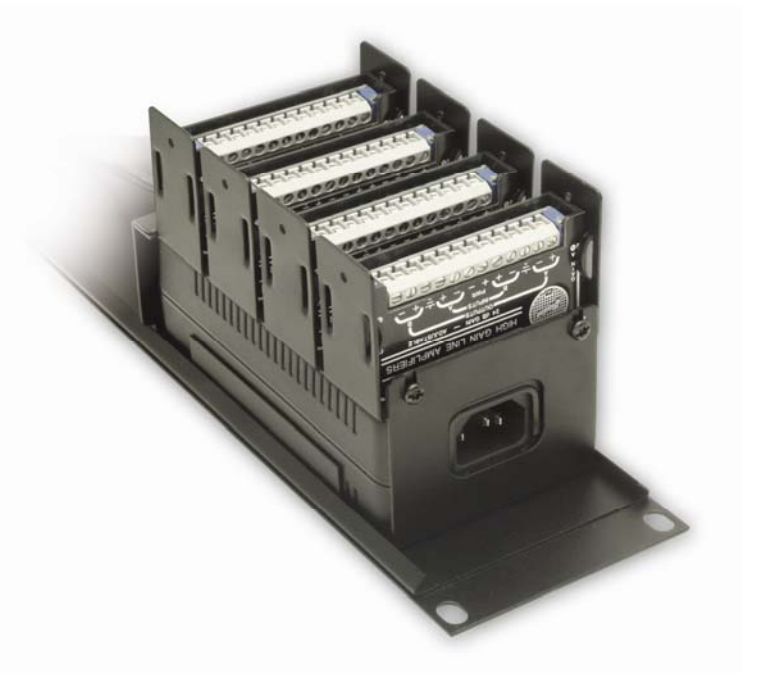
### STICK-ON<sup>®</sup> Mounting Bracket

**APPLICATION:** The FP-PBR4 is a mounting frame with slots for four STICK-ON modules. The FP-PBR4 mounts on an FP-PSB1 power supply bracket or to any flat surface. The FP-PBR4 design allows the installer to secure the modules without using any adhesive pads. Each module slides in and snaps into position. It may be easily released for adjustment or removal.



**FP-PBR4 mounted on FP-PSB1 without modules installed**

The FP-PSB1/FP-PBR4 assembly may be mounted directly to any flat surface or may be mounted in an RDL FP-RRA or FP-RRAH rack panel.



**FP-PBR4 mounted on FP-PSB1 installed in an FP-RRA rack mount panel**

An RDL PS-24U2 power supply and four STICK-ON modules are shown installed.



**RDL**® Radio Design Labs®

SPECIALISTS IN PRACTICAL PRECISION ENGINEERING™

## ACCESSORIES

Model FP-PBR4

STICK-ON Mounting Bracket

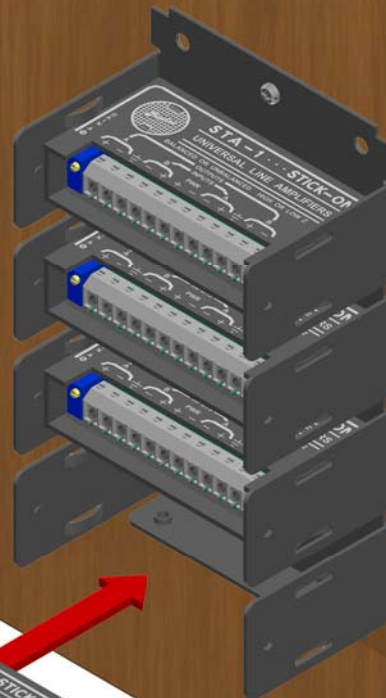
## Installation/Operation

EN55103-1 E1-E5; EN55103-2 E1-E4

Typical Performance reflects product at publication time exclusive of EMC data, if any, supplied with product. Specifications are subject to change without notice.

### Step 1:

Fasten FP-PBR4 to flat surface (or to FP-PSB1 Power Supply Mounting Bracket, available separately)



### Step 3:

Connect wiring to modules

### Step 2:

Slide STICK-ON module(s) into the slots until they latch

STICK-ON modules can easily slide out for removal or adjustment by applying outward pressure to the FP-PBR4 tabs located at each side of the module.

### TYPICAL PERFORMANCE

Dimensions:

Height:	2.0 in.	5.08 cm
Width:	3.3 in.	8.38 cm
Length:	5.95 in.	15.1 cm

Radio Design Labs Technical Support Centers

U.S.A. (800) 933-1780, (928) 778-3554; Fax: (928) 778-3506

Europe [NH Amsterdam] (+31) 20-6238 983; Fax: (+31) 20-6225-287